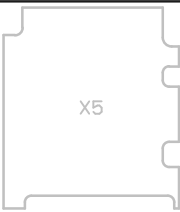


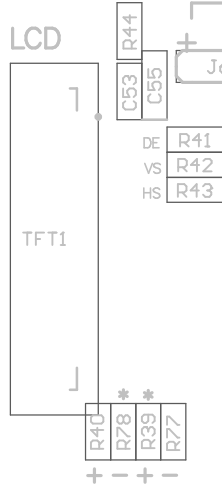
SDCard



R26
D13



OSD056TN53



LCD MODE
R10 D6
R11 D7
R12 D8

LEDS

GND

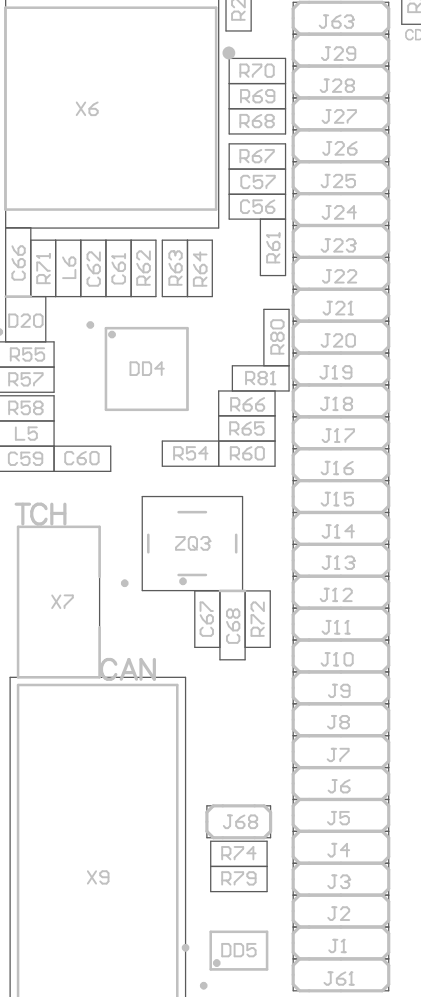
VBAT



ETHERNET



PORT1



TCH



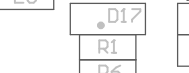
CAN



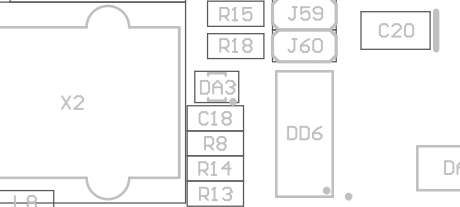
X2



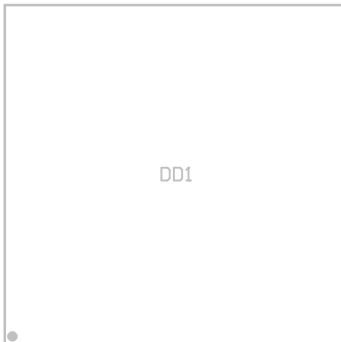
USB-UART



BOOT LOADER



LPC



JTAG



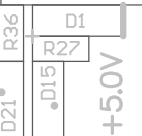
PORT2



RESET



+5.0V



X13

X11

DD3

DD2



C5

C4

C7

C6

C24 C26 C42 C29

C31

C33

C35 C34

C36

+ C9 C2 D3 C3 C12 L2 L1

C41

C22

C21 +

C40

C43

C37

C38

C28

C25

C32

C30

C23

R29

C54
C52
C51 +

C58